

TEAM ROLES – TEAM MEMBERS



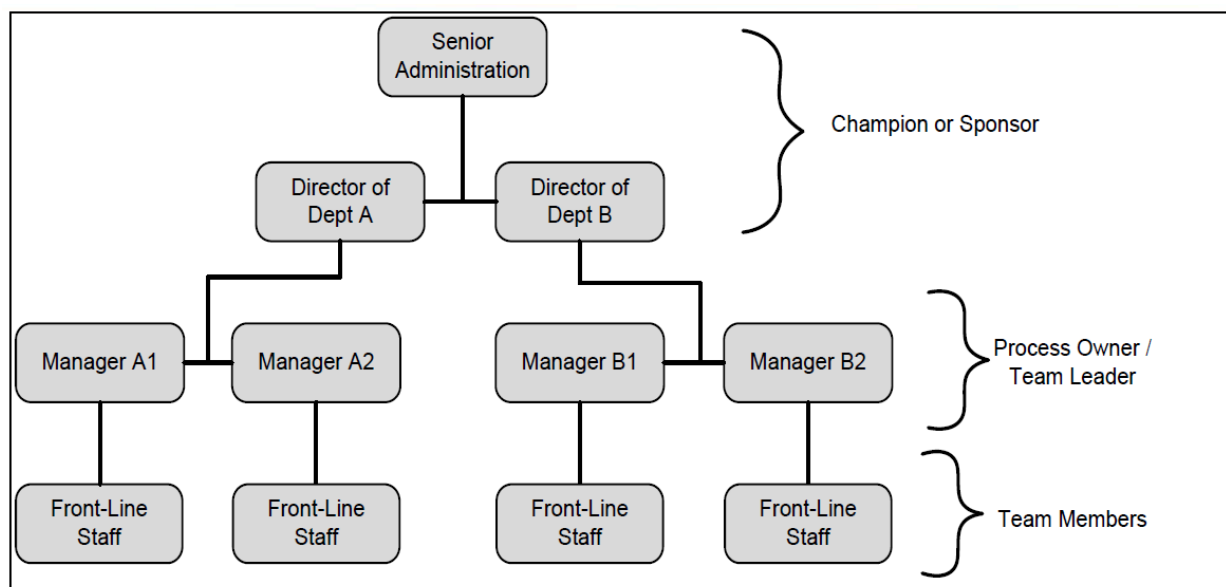
A Team Member is defined as a member of the staff who “touches” the process and apply the process improvement tools. Team Members will spend approximately 15-20 hours attending meetings and performing project work during the project timeframe (3 – 4 months).

A Team Member:

- Actively participates in team events
- Is responsible for using their knowledge and experience to identify waste, generate solutions and implement them
- Assists with measurement collection phase and measurement checkpoints by working with team lead to ensure collection is being completed
- Actively participates in testing and implementing changes
- Assists with quality board set up and updating

Team Composition

- The team should include 3 - 5 members (not counting the sponsor/champion), and should include the people who “touch” the process.
- This means staff members who:
 - Perform one or more of the process steps
 - Provide an input to the process
 - Receive an output from the process



Shared Health works collaboratively with our provincial service delivery partners to develop and deliver lean training to staff across Manitoba.

December 14, 2022