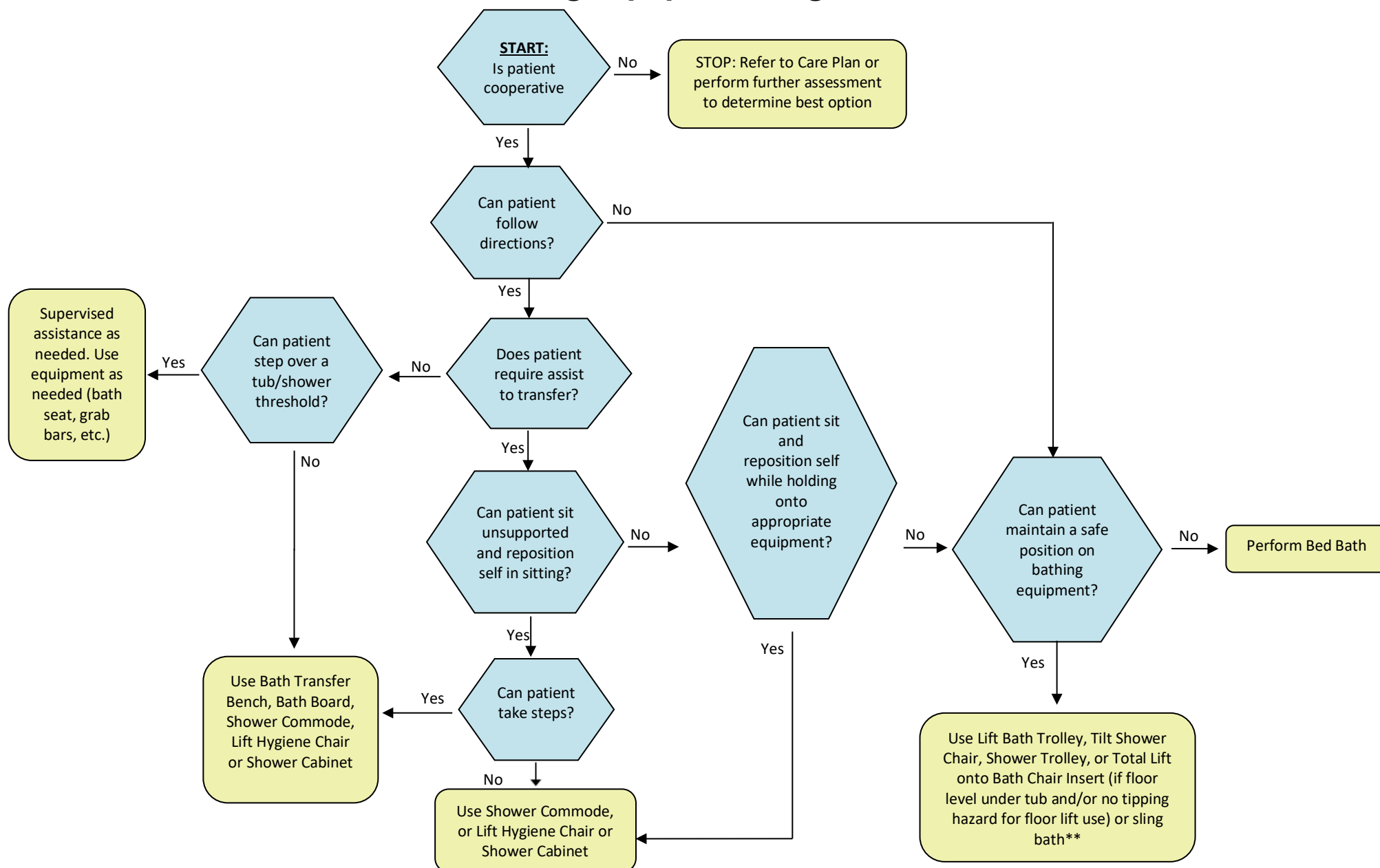


Bathing Equipment Algorithm



*This algorithm is to be used as a guideline only and should not replace clinical reasoning and assessment, including environmental factors (e.g., tub/shower set-up). A hands-on assessment should be done with any new piece of equipment.

*The weight capacity of equipment should be checked prior to use.

* A more supportive method of bathing/equipment may be required if a particular piece of bathing equipment is not available at your site.

* Refer to manufacturer's equipment guidelines.

**Sling bath may only be considered if all other supported bathing equipment is not appropriate/available.