



[Shift Link](#)

[ESP Login](#)

[LMS Login](#)

[PTNT Website](#)



## Provincial Travel Nurse Team Monthly Newsletter

# Happy Holiday Season

December 2025

---

Wishing each and every one of you peace, joy and warmth this holiday season and throughout the coming year. May this time bring moments of reflection, gratitude, and connection with those who matter most. We celebrate the diversity of traditions that make this season meaningful for everyone.

# Be In The Know

PTNT Latest Updates

## Join Us

in welcoming **Stephanie Carriere** to our team as an Administrative Secretary. Stephanie comes with a wealth of knowledge and experience to the role and we are excited to have her join our team!

---



- **Prairie Mountain Health:** December 19 to December 22
  - **Southern Health Sante Sud:** December 5 to December 8
  - **Interlake Eastern Health Region:** December 17 to December 24
  - **Winnipeg Regional Health Authority:** December 12 to December 15
- 



## Prairie Mountain Health

**Needs Available as of December  
19, 2025**

- Melita Medicine-TCU

### **Required Certifications**

All staff are required to have an active BLS on file in order to continue supporting sites

- McCreary Alonsa PCH- Medicine TCU
- Shoal Lake Strathclair PCH-TCU
- Westview Lodge PCH Boissevain
- Evergreen PCH- Boissevain
- Elkwood Manor PCH- Elkhorn
- Dauphin St. Paul's PCH
- Melita PCH
- Sandy Lake PCH
- Riverdale PCH- Rivers
- Riverdale Rehab- Rivers
- Reston PCH-TCU
- Baldur PCH-TCU
- Davidson Memorial PCH- Cartwright

within the program. All program additions require staff to have a minimum of 1+ years or the equivalent of 2015 hours experience within the last 7 years

---

## Southern Health Sante Sud

All sites listed below require staff to have an **active BLS on file**. Staff interested in supporting the sites below are encouraged to visit our website to complete the Site Access Request Form.

### Needs Available as of **November 26, 2025**

- Vita Transitional Care
  - Vita District Place PCH
  - St. Claude Medicine- TCU
  - Douglas Campbell Lodge PCH
  - Red River Valley Lodge PCH
  - Third Crossing Manor PCH
  - Lions Prairie Manor PCH
-



# PROGRAM UPDATES

---

## ESP Self Service



It is the responsibility of staff to verify the accuracy of shifts and travel time within their ESP workspace **prior** to each pay period. If discrepancies are noted, please reach out to our secretary team at [SHProvincialTravelNurseTeam@sharedhealthmb.ca](mailto:SHProvincialTravelNurseTeam@sharedhealthmb.ca)

Please note: failure to log in to ESP for 90 days will result in access being revoked and staff needing to contact **Service Desk** for assistance.

**Approved Education** will be added to staff ESP workspaces **after** attendance has been confirmed at the educational event. Attendance is confirmed by the course instructor or submission of the applicable educational certification.

---

## New ShiftLink App



The **NEW** Shift Link app is required to be downloaded to experience new features available. All staff are strongly encouraged to download the **NEW** app and use it in unison with the existing app as this transition takes place.

Download the **NEW** App Now

[Google Play Store](#) | [Download Now](#)

[Apple Store](#) | [Download Now](#)

*Note the distinction of the NEW app icon is the dark colored background*

---

## Shift Adjustment Form

It is the responsibility of staff to fill out a **Shift Adjustment Form** for any of the following scenarios and have it signed for verification by the unit manager/ supervisor/ CRN:

- Overtime
- Missed Breaks
- Charge Assignments
- Triage Assignment [at applicable ED sites]
- And more

Shift Adjustment Forms can be found on the [PTNT website](#). Please download and save a copy when required.

Staff are to submit **verified Shift Adjustment Forms** to [SHProvincialTravelNurseTeam@sharedhealthmb.ca](mailto:SHProvincialTravelNurseTeam@sharedhealthmb.ca) at the **end of their travel assignment** to ensure timely processing.

---

## What's New?

### Clinical and Educational Information

---

## Clinical Practice | Documentation Matters

While critical thinking, system assessments and care plan management are integral components of the nursing role, without clear and concise documentation practices staff expose themselves and patients to increase risks. These risks can result in increased errors and potential harm to patients.

**How Can You Enhance Your Documentation Practices?** Staff are encouraged to utilize the resources below in reference with those set forth by their regulating bodies.

- Canadian Nurses Protective Society| [InfoLAW: Quality Documentation: Your Best Defense](#)
  - College of Registered Nurses of Manitoba| [Principles of Quality Registered Nursing Documentation](#)
  - College of Registered Nurses of Manitoba | [Documentation Checklist](#)
-

# Clinical Practice | Hemodialysis Treatment Records and MAR Protocols

Standards of practice and policies are instituted as a means of providing safe guards, standardized workflows and ensuring that patient care is provided in a safe manner. As regional concerns have been identified due to lack of adherence to the identified policies below- we wanted to provide an opportunity for enhanced understanding and familiarity with the policies that guide your documentation practices.

## Documentation Reminders:

- Chart anything requiring follow-up and/or changes to existing parameters of care
- Use caution when double checking medication flow sheets and ensure to complete medication rights as outlined by your regulating body
- Use legible handwriting/printing with appropriate ink colors (blue, black, red)
- Sign all required paperwork

## Resources:

- [PMH: Hemodialysis Treatment Record Standard Policy](#)
- [PMH: Hemodialysis Flow Sheet Standard Policy](#)



We encourage all healthcare professionals in all areas to receive a flu shot to help prevent the spread of serious illness, especially for high-risk populations (older adults, young children and those with chronic health conditions)

To learn more about the flu vaccine in Manitoba Click here: [Flu vaccines in Manitoba](#)

---

## Respiratory Syncytial Virus (RSV)

In Canada, RSV season typically runs from November through April resulting in increased outbreaks of respiratory illness, particularly for infants, young children, and older adults. Vaccines and preventative medications are available for vulnerable populations. Ensure you reference site policies for vaccine administration details.

**Pediatric immunoprophylaxis criteria** in Manitoba has now expanded to include all infants born between **October 1, 2025 to March 31, 2026**.

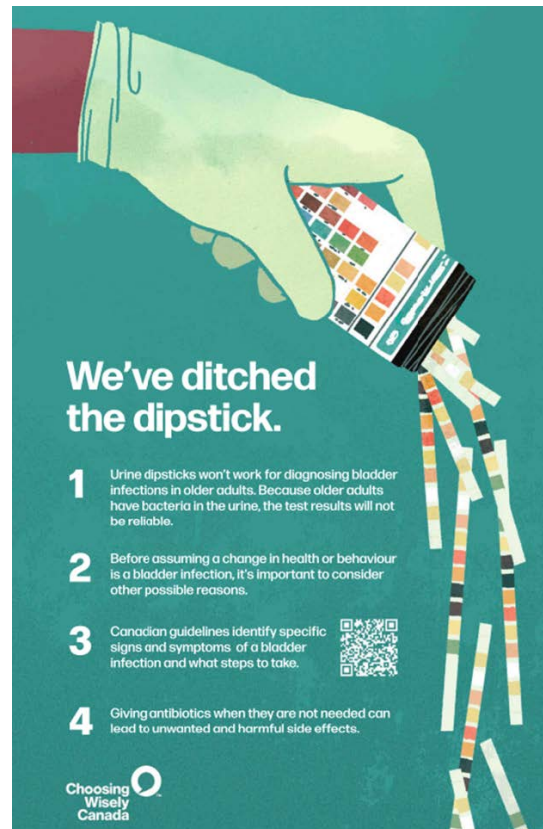
For public resources click here: [Respiratory Syncytial Virus \(RSV\)](#)

## Long Term Care Provincial Education

Manitoba is joining Choosing Wisely Canada to *Ditch the Dipsticks in LTC*. **Joint Statement on Urine Testing:** Do NOT purchase, store, or use urine dipsticks in long-term care homes.

For additional information, please click the links below:

- [Ditch The Dipstick Presentation](#)
- [Ditch The Dipstick Poster](#)
- [Urine Testing FAQs](#)
- [Bladder Infection, or something else? Four steps](#)



## Regional Updates

Continuing education opportunities listed below are eligible for potential reimbursement when approved through the education request form process. Details of the reimbursement eligibility is based on case by case review and discussion with your respective manager.

### Interlake Eastern Regional Health

#### Neonatal Resuscitation Record and Education Guideline

Staff that support *obstetrical* or *rural acute* sites in IERHA are encouraged to review the following revised documents that are also available on site.

The Neonatal Resuscitation Record reflects best practice for neonatal resuscitation as recommended in the 8th edition Neonatal Resuscitation Textbook. This form is to be used in any setting where a neonatal resuscitation following a birth may occur. Accurate and timely documentation during an emergency situation is essential for clinical decision-making and the role of documenter should be delegated to an experienced staff member.

- [Neonatal Resuscitation Record](#)
- [Neonatal Resuscitation Record- Education Guide](#)
- [Neonatal Code Blue Post- Resuscitation Debrief](#)

---

## Long Term Care Education: Dementia Care Education 2026

Are you a nurse supporting PCH sites in IERHA? If so and you are interested in this educational opportunity, please fill out an *Education Request Form*- link on our website.

**Date-** April 29 & 30, 2026 with practical application May 28, 2026

**Time-** 8:30- 15:30

**Location-** Old Selkirk Hospital cafeteria, 100 Easton drive

Click here for more info: [Dementia Care](#)

---

## Long Term Care Fall Education Packages

The Interlake-Eastern Regional Health Authority's PCH Program develops and administers self-learning packages to ensure you are aware of, and understand the requirements related to the **Manitoba Health Standards**, and **Accreditation Canada's Required Organizational Practices (R.O.P.)**.

The Education packages are available on site at all PCH facilities throughout Interlake-Eastern Health. The expectation is for staff to complete the packages while on shift.

### Instructions:

1. Please refer to the policies and the supplemental information prior to completing the Quiz.
2. You may work in groups; however, each staff is required to complete their own quiz and submit.
3. Complete both the Quiz and Speaker Opinion Form (evaluation), and hand in to your Manager by no later than **Friday, December 31, 2025**.

---

## SHSS: Canadian Serious Illness Conversations Course by Pallium Canada

This course is designed to provide health care professionals with the tools and knowledge needed to have compassionate and effective conversations with patients and their families dealing with serious illnesses. This course empowers health care professionals with a comprehensive understanding of the Serious Illness Conversation Guide©, developed by Ariadne Labs of Harvard Medical School.

- **Course structure:**
  - Online Modules (approx 1.5 - 2 hours)
  - Facilitated session (to follow online modules- can be online or in person)
- **When:** Nov 12, December 16, January 29 (multiple sessions available per day)
- **Where:** Virtual
- **Registration:** Contact our educator team

Click for more details:

[November 2025 poster](#)

[December 2025 poster](#)

[January 2026 poster](#)

---

## Toronto Beside Swallowing Screening Test| TOR-BSST

*Looking to further enhance your knowledge base regarding swallowing assessments for our stroke population? SHSS is offering a TOR-BSST session that provides insight into the evidence based screening tool as part of the stroke strategy. This screening tool is used to determine patients at risk of dysphagia post cerebrovascular accident or transient ischemia attack.*

**When:** January 12, 2026 from 0800-1200

**Where:** Boundary Trails Health Centre | Hwy 3 & 14, Winkler MB

**Registration:** [Register Now](#)

**Important Note:** Staff are only eligible to be paid for attendance for the above session if a formal education request has been submitted and approved **prior to** registration

## SHSS: Palliative Care Dying to Learn Series

This is a Self Learning Module with an estimated duration of 30 minutes

**Module:** Principles of a Palliative Approach to Care: [Click here](#)

---

## Provincial Education Opportunities

*Continuing education opportunities listed below are eligible for potential reimbursement when approved through the education request form process.*

*Details of the reimbursement eligibility is based on case by case review and discussion with your respective manager.*

---

### Ethics Education Series | 2025-2026

The St. Boniface Hospital Health Care Ethics Service and Shared Health Ethics are pleased to offer monthly hour-long ethics education sessions for health care providers.

To view the available sessions from September 2025 to June 2026 and register click [here](#)

---

## Manitoba Nurses Union | MNU

Updates regarding the collective agreement and union related items

The Provincial Travel Nurse Team falls under **Local 161**

Local Relations Officer is **Rachel Mammott**

**Email:** [rmamott@manitobanurses.ca](mailto:rmamott@manitobanurses.ca) | **Phone:** (204) 938-4229

---



---

Shared Health | Provincial Travel Nurse Team  
791 Notre Dame Avenue, Winnipeg MB  
R3E 0L8

**Email:** [SHProvincialTravelNurseTeam@Sharedhealthmb.ca](mailto:SHProvincialTravelNurseTeam@Sharedhealthmb.ca) | **Phone:** 204-787-4488 or toll free: 1-877-525-5517