

[View online version](#)



**Shared health**  
**Soins communs**  
Manitoba

[Shift Link](#)

[ESP Login](#)

[LMS Login](#)

[PTNT Website](#)



## **Provincial Travel Nurse Team Monthly Newsletter**

**February 2026**

### **Be In The Know**

**Latest Program Updates**



# Accreditation Basics For All Staff

12 minute on-line course that provides an introduction to Accreditation.

[Register through the LMS - Search for "Accreditation Basics"](#)

Provincial Accreditation is fast approaching in all acute-care sites. Staff may be inquiring how this affect you as a front-line nurse within our program? The below 12-minute LMS module will give you insight into:

- What is Accreditation?
- What does Accreditation Canada do?
- **What is your role in Accreditation?**
- What do Accreditation Canada surveyors want to know?
- Tips on how can you prepare for the Accreditation On-Site survey visit

Within LMS, search **Accreditation Basics** and select register. Once registered, select the Learning Plan tab and launch the course.

---

## **Update Expense Claim Forms | Auto-Notifications**

As noted in communication from our management team in late March, the following updates are pertinent to our front-line staff.

- Our team has been experiencing an issue where some users are receiving a bounce-back message related to file size when submitting an expense claim. Please note that these claims are still being received as expected. The bounce-back notifications are being auto-sent in error. At this time, no action is required and please disregard this message.
- Please note that the last payment run for the fiscal year took place March 18, 2026. The next payment run will occur early April, once accounts payable has completed all year-end procedures.

- **Attachments:** If staff have failed to add attachments in the email submission with their expense claim form, please **reply** back to the email from service desk with the attachment to ensure it is included in the same claim. Sending a separate email results in a separate claim and will not link it with the previously submitted form.

For additional questions or concerns regarding submitted expense claim forms, please connect with your program manager.

---



---

## Prairie Mountain Health

**Needs Available as of April 3, 2026**

- Dauphin Endoscopy
- Brandon Internal Medicine
- Russel Oncology

### **Required Certifications**

All staff are required to have an active BLS on file in order to continue supporting sites within the program. All programs require staff to have a minimum of 1+ years or the equivalent of 2015 hours experience within the last 7 years within the designated field.

**Endoscopy:** Minimum 2 years of critical care/emergency/endoscopy experience within field in conjunction to active ACLS

**Oncology:** Requires nurses to have experience within both treatment room and clinic settings and have completed the CCP program or equivalent.

---

## Interlake Regional Health Authority

All sites listed below require staff to have an **Active BLS** on file. Staff interested in supporting the sites below are encouraged to visit our website to

complete the Site Access Request Form.

## Needs Available as of **April 1, 2026**

- Goodwin Teulon PCH
- 



---

## **REMINDER** Expense Claim Form | Current Version Use

Reminder to all staff that it is imperative that prior to completion and submission that they ensure they are utilizing the most current version of the document. This is to ensure that your claim is processed in a timely manner.

### *How to tell what version you are using?*

Simple! Next to the document on our website it will indicate when it was last updated. Additionally, when the document is opened, in the top left-hand it will indicate when the document was last updated. The most current version in circulation was updated **January 27, 2026**. If your version does not reflect this timeline, please access the current version on our website.

---

## **Struggling to Know Who to Connect With?**

Check our quick reference below to identify who to connect with regarding your questions.

- **Expense Claim Forms**- Connect with your program manager with the associated Requisition Number of the claim in question.
- **Payroll + ESP Discrepancies**- Please note that ESP is not updated in real time and that staff are to review it at the end of each pay period for accuracy. This contact point is also appropriate regarding follow-ups for payment of your onboarding process. If discrepancies are noted, please contact [SHProvincialTravelNurseTeam@sharedhealthmb.ca](mailto:SHProvincialTravelNurseTeam@sharedhealthmb.ca)
- **Shift Link Inquiries**- Connect with your program manager.

- **Education Requests, Site Specific Information, Onboarding-** Contact our educator team.
- **New Site Orientation**- It is the staff's professional responsibility to determine when orientation is required to a new site and submit the request as outlined in the PTNT Program Orientation LMS module. For the status of these request submissions, please connect with our secretary team at the email listed above.

## Shift Link | Active Site List Visibility

*Did you know that you can independently view what sites are already active within your Shift Link account before submitting a new request?*

Staff can log in to the Shift Link **website** (not the App) to view the active workspaces within your profile. Staff are able to select **Shift Link Notifications** and within the associated page- select **Department**. A drop down bar will become visible allowing you visibility into sites that are active within your profile.

Please ensure this step is taken *prior to* requesting additional sites to be added to your workspace to minimize duplicate requests.

The screenshot displays the 'Shift Notifications' interface. On the left is a dark sidebar with navigation options: Dashboard, ShiftLink Notifications (highlighted), Upcoming Shifts, Master Schedule, Availability, and Administration. The main content area shows a 'Department' dropdown menu currently set to 'NOTHING SELECTED'. A hand cursor is pointing at the dropdown arrow. To the right of the dropdown is a 'REFRESH' button. Below the dropdown is a scrollable list of active sites, each with a time slot. The list includes: IE Ashern PCH (18:45), IE East Gate Lodge PCH Beausejour (19:00), IE Eriksdale PCH (07:00), IE Sunnywood PCH Pine Falls (19:00), PM Benito PCH (07:00), PM Birtle Medicine TCU (15:00), PM Dauphin PCH (07:00), PM Erickson PCH (07:00), PM Gilbert Plains PCH (07:00), and PM Glenboro PCH. A vertical scrollbar is visible on the right side of the list. At the bottom right, there is a dropdown for 'items per'.

# What's New?

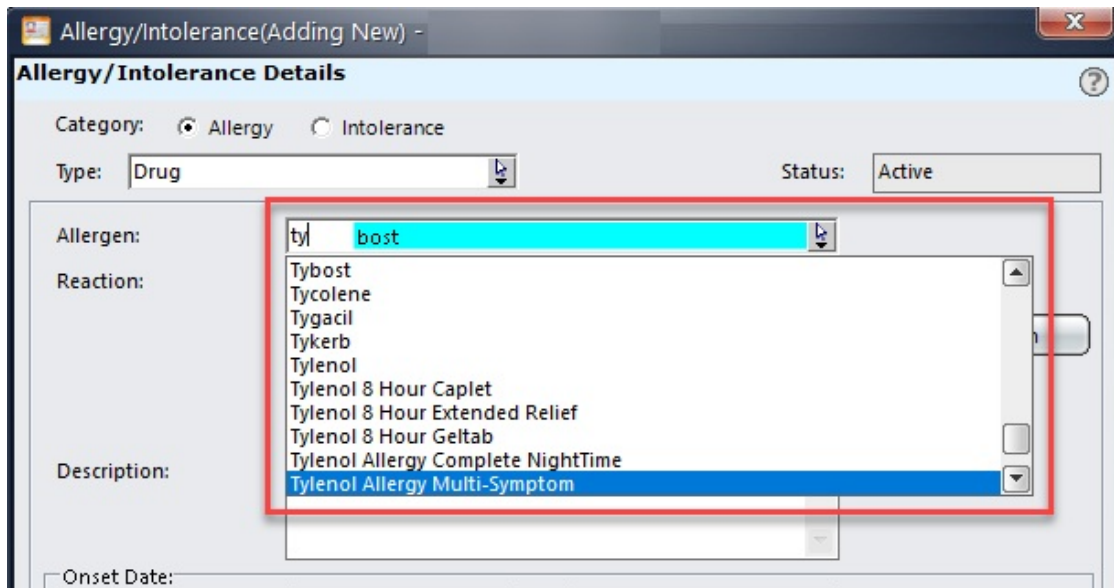
## Clinical and Educational Information

Continuing education opportunities listed below are eligible for potential reimbursement when approved through the education request form process. Details of the reimbursement eligibility is based on case by case review and discussion with your respective manager.

### EPR | Allergies Summary Changes

The drug allergens located within the **Allergies Summary** of EPR has been updated with additional drug allergens to select from. Please review the available resources below that provide further information regarding these changes. The cadence of the integrated changes will occur over the coming months, therefore, when adding an allergy in EPR, staff are encouraged to type in the allergen name which will open up the available listing as shown below.

- [EPR Allergen Resources](#) (Resources accessible through use of work email only)



The screenshot shows the 'Allergy/Intolerance Details' form in EPR. The 'Category' is set to 'Allergy' and 'Type' is 'Drug'. The 'Status' is 'Active'. The 'Allergen' field is open, showing a search bar with 'tyl' and 'bost' entered. A dropdown list of drug allergens is displayed, including Tybost, Tycolene, Tygacil, Tykerb, Tylenol, Tylenol 8 Hour Caplet, Tylenol 8 Hour Extended Relief, Tylenol 8 Hour Geltab, Tylenol Allergy Complete NightTime, and Tylenol Allergy Multi-Symptom. The 'Tylenol Allergy Multi-Symptom' option is highlighted in blue. The 'Reaction' and 'Description' fields are empty. The 'Onset Date' field is also empty.

**NEW EPR Patient List Features**

Go-Live March 5, 2026

This integrated feature was implemented to to enable support service-based Patient Lists. When a new **Patient List** based on service is created using the **Advanced Patient List** feature, it will prevent patients from dropping off the list when the service in EPR is updated to an Alternate Level of Care (ALC) service.

**For Example:**

- Prior to this change, if a user created a criteria-based Patient List using the main service of Surgery/Trauma and if the service is updated to ALC Surgery/Home Care, the patient will drop off the list
- Effective March 2, 2026, the user can create an Advanced Patient List based on the main service of Surgery/Trauma; the patient will remain on the list when changed to ALC Surgery/ Home Care or any other subsequent ALC services

*For additional information and resources, please select the links below.*

- [How to Create an Advanced Patient Visit List by Service](#)
- [EPR Advanced Patient List Memo](#)

---

## **NEW Provincial Biochemistry Genetics Requisitions**

**Go Live- March 23, 2026**

Please review and familiarize yourself, where applicable with the changes made to the following Provincial Requisitions. Please select the requisition below to view.

- [Biochemical Genetics Requisition- Blood](#)
  - [Biochemical Genetics Requisition- Urine and CSF](#)
-



## **NEW** Provincial Clinical Notification of Measles Form

Due to the increase in measles-related clinical notifications over the past several months, Manitoba Public Health is streamlining the notification process for measles.

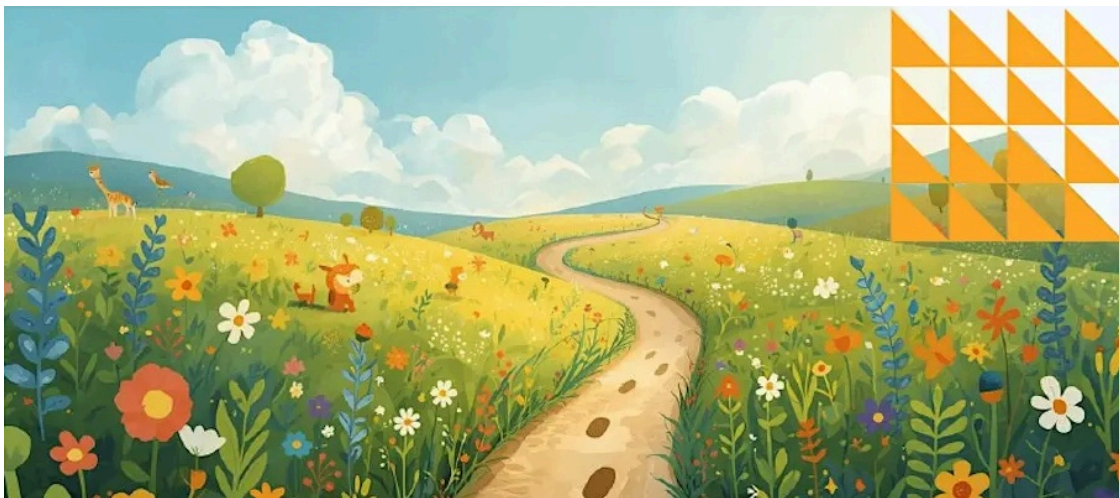
Please review the [Provincial Memo here](#) that provides insight into:

- Reporting Requirements
- Measles Testing Options
- Seeking Urgent-Emergent Care
- Additional Resources

---

## Provincial & Regional Updates

---



**2026 Manitoba Pediatric Health Conference | May 1, 2026**

Little Feet, Big Journey

*Looking to broaden your understanding of the nuances with pediatric care and provincial resources? Join this interdisciplinary conference that discusses Indigenous Services and Supports, Family Integrated Care, Northern Health Care Challenges and more!*

**Date:** May 1, 2026

**Location:** Zoom

**Time:** 0800-1600

**Cost:** \$20/person. In order to claim through program, attendance must be pre-approved prior to registration through our Education Request Form

**Registration:** Click [Here](#).

---

## **NEW Revised IV Acetylcysteine (NAC) Protocol | Go- Live April 1, 2026**

Please see memo included below as well as resources regarding the updated PHA NAC protocol that will be instituted April 1, 2026.

Resources Include:

- Provincial Order Set
- Provincial Supplementary Resource to Accompany Order Set
- Provincial Monographs for Pediatric and Adult
- Provincial Clinical Practice Guideline
- Provincial Education Poster
- Provincial Education PowerPoint Presentation

NAC Memo  
Provincial Resources

---

## **NEW RL6 Provincial Update | RL Decedents Events**

As of **March 13, 2026**, a new event reporting was integrated into the existing RL6 environment. The integration of the Decedents Events focuses on incidents that may occur during the provision of services to these individuals.

These events are categorized as follows:

- Provision of Care
- Privacy/ ID/ Consent/ Documentation

- Security/Safety

Examples of incidents that would be documented within these reports include but are not limited to:

- Delay in transport to the morgue
- Communication/misunderstanding when relaying information to the family
- Culturally insensitive care
- Stillbirth Protocol Issue
- Missing/ incorrect information on death documentation

For ongoing resources and supports regarding the use of the RL6 program, select the link [here](#).

---

## Provincial Education Opportunities

*Continuing education opportunities listed below are eligible for potential reimbursement when approved through the education request form process.*

*Details of the reimbursement eligibility is based on case by case review and discussion with your respective manager.*

---

### Ethics Education Series | 2025-2026

The St. Boniface Hospital Health Care Ethics Service and Shared Health Ethics are pleased to offer monthly hour-long ethics education sessions for health care providers.

To view the available sessions from September 2025 to June 2026 and register click [here](#)

---

### Manitoba Nurses Union | MNU

Updates regarding the collective agreement and union related items

The Provincial Travel Nurse Team falls under **Local 161**

Local Relations Officer is **Rachel Mammott**

**Email:** [rmamott@manitobanurses.ca](mailto:rmamott@manitobanurses.ca) | **Phone:** (204) 938-4229

---

Shared Health | Provincial Travel Nurse Team  
791 Notre Dame Avenue, Winnipeg MB  
R3E 0L8

**Email:** [SHProvincialTravelNurseTeam@Sharedhealthmb.ca](mailto:SHProvincialTravelNurseTeam@Sharedhealthmb.ca) | **Phone:** 204-787-4488 or toll free: 1-877-525-5517