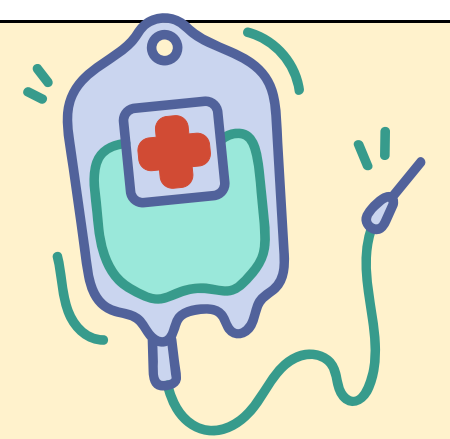


High-Alert Medications

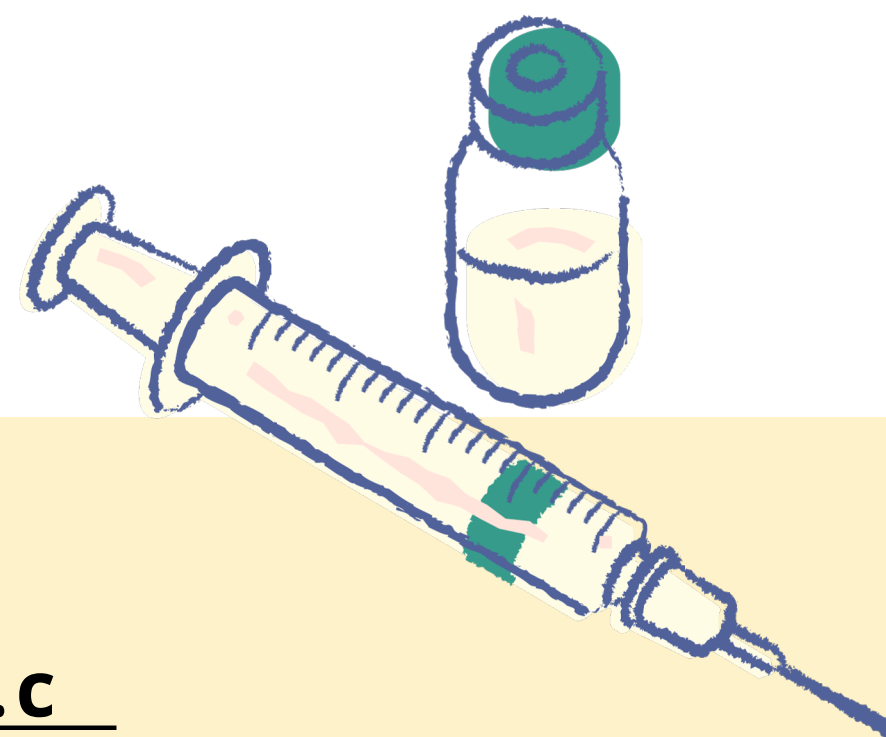
CONCENTRATED ELECTROLYTES

The following concentrated electrolytes for parenteral administration are provincially recognized High-Alert Medications. They require Independent Double-Checks by Visual Verification.

<p>Calcium injection, all salts</p>	<p>Concentrated formulations include:</p> <ul style="list-style-type: none"> - calcium gluconate 100 mg/mL (10%) (equals 9.3 mg Ca⁺⁺/mL) - calcium chloride 100 mg/mL (10%) (equals 27.3 mg Ca⁺⁺/mL)* <p>If Pharmacy or Nurse prepared: all concentrations are High-Alert</p> <p>*EXCEPTION: calcium chloride when administered in emergency situations, defer to SDO-specific procedures</p>
<p>Dextrose injection</p>	<p>Concentrated greater than 20% for IV continuous infusions only</p>
<p>Magnesium Sulfate injection</p>	<p>Concentrated greater than 20% or 200 mg/mL (equivalent to 20 mg/mL or 0.8 mmol/mL of Mg⁺⁺)</p>
<p>Potassium injection, all salts</p>	<p>Concentrated formulations include:</p> <ul style="list-style-type: none"> - potassium chloride 2 mmol K⁺/mL - potassium phosphate 4.4 mmol K⁺/mL (equals 3 mmol phosphate/mL) - potassium acetate 4 mmol K⁺/mL (equals 4 mmol acetate/mL) - potassium chloride 20 mmol K⁺/100 mL minibag <p>If Pharmacy prepared: concentration of final products greater than or equal to 80 mmol/L of K⁺ are High-Alert</p> <p>If Nurse prepared: all concentrations are High-Alert</p>
<p>Sodium injection, all salts</p>	<p>Concentrated formulations include:</p> <ul style="list-style-type: none"> - sodium acetate 4 mmol/mL - sodium bicarbonate 1 mmol/mL* - sodium chloride 4 mmol/mL - sodium phosphate 4 mmol Na⁺/mL (equals 3 mmol phosphate/mL) - sodium chloride 3% (contains 0.513 mmol Na⁺/mL) <p>If Pharmacy or Nurse prepared: concentration of final products greater than 0.9% sodium chloride (0.154 mmol/mL of Na⁺) are High-Alert</p> <p>*EXCEPTION: sodium bicarbonate when administered in emergency situations, defer to SDO-specific procedures</p>



Limiting the availability of concentrated electrolytes is an important safety practice that minimizes the risk of patient/client harm.



Want to Learn More?

<https://healthproviders.sharedhealthmb.ca/projects-standards-and-guidelines/>

