

Introducing AI scribe technology

AI scribe tools are specialized applications that use artificial intelligence (AI) and natural language processing to automate the documentation of patient interactions in healthcare. They transcribe and summarize conversations between clinicians and patients, creating structured medical notes in real-time, which can help reduce the administrative burden on healthcare professionals.

Resources and guidelines

Providers should understand considerations, responsibilities and obligations associated with using AI scribe tools and follow licensing body guidelines and regulations on use. Visit [AI Scribe Resources](#) on the Shared Health Primary Care Provider Portal for more information. Check back regularly for updates as use of these tools continue to evolve.

Available resources include:

- [Usage Guidelines](#)
- [Infoway AI Scribe Program FAQs](#)

Selecting an AI scribe tool

AI scribe tools have a variety of features, functions and integration opportunities which should be reviewed to ensure end user, facility and organizational needs are met. Users should understand compatibility with the clinical system and associated devices that may be used with the AI scribe tool (e.g. EMR, laptop, tablet, smartphone). If a provider practices in a setting where they are not the trustee of patient personal health information (e.g. clinic, hospital, regional facility), they may need to use an AI scribe approved by the setting directly.

[More information can be found in our FAQs.](#)

Endorsed AI scribe tools

Canada Health Infoway's AI Scribe Program has pre-qualified nine (9) AI scribe tools through a rigorous assessment process evaluating criteria such as vendor capabilities, privacy, cybersecurity, EMR integration and clinical usability in primary care. It is strongly advised that providers use endorsed technology from this pre-qualified list to ensure use of AI scribe solutions that have been reviewed and meet rigorous privacy and security requirements. In addition, using an AI scribe tool that integrates with your digital health record reduces privacy and security risks associated with migrating data between systems. Visit the [Canada Health Infoway website](#) to see the list of endorsed AI scribe tools.

Canada Health Infoway's AI Scribe Program for Primary Care Providers

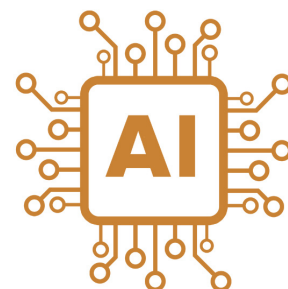
Shared Health is participating in the [Canada Health Infoway AI Scribe Program](#), a nationally funded program in collaboration with provincial and territorial partners.

Primary care providers (PCPs) from independently-owned clinics, regionally-funded sites and partner organizations supporting First Nation communities who participate will have a 12-month free license to use an approved AI scribe tool. This pilot initiative in primary care is part of our ongoing commitment to enhance clinical documentation and reduce administrative burden through innovative digital health solutions. Manitoba has been allocated 500 licenses as part of the program.

Eligible PCPs include family physicians, nurse practitioners, nurses working in remote communities and pediatricians providing longitudinal care in the community.

Online registration in two Manitoba streams opened June 10, 2025 via the [Canada Health Infoway AI Scribe Program](#) website. Registration will remain open until capacity has been reached.

Find the AI Scribe Program in Manitoba FAQs by visiting [AI Scribe Resources](#) on the Shared Health website.



Home Clinic - Did you know?

New Primary Care Quality Indicators

Home Clinics commit to provide continuous, comprehensive care for enrolled patients including providing services consistent with the most recent version of the Manitoba Primary Care Quality Indicators Guide.

In April 2024, this Guide was updated to Version 5 which can be found on the [Manitoba Health website](#).

Manitoba Certified EMRs have added new indicators, including alerts and reminders for care, to your EMR and your Primary Care Data Extract. New Mental Health indicators have been added along with a new category of indicators for Sexually Transmitted and Blood Borne Infections (STBBIs). More information on these changes can be found in our [Winter 2025](#) and [Spring 2025](#) editions of the EMR Connection newsletter.

New file added to Primary Care Data Extract – 10 files to be submitted

Home Clinics on Certified EMRs must now be submitting 10 files through the Home Clinic Portal which includes generating and submitting a new set of 10 files each month. Your clinic should be able to generate and submit the new PCDE without EMR vendor involvement. Home Clinics are required to submit a monthly Primary Care Data Extract (PCDE) which provides information to Manitoba Health on alignment to care recommended in Manitoba's PCQIs. The PCDE also provides the supplemental information required for eligible family physicians to claim Family Medicine Plus tariffs.

Check the status of your EMR to the PCQI v5.1 specification

Information on vendor certification status is available on the [Shared Health website](#). Contact your vendor for more information about certification and about how to use your EMR to support comprehensive PCQI alignment and monthly PCDE submissions. Home Clinics can also contact their assigned Home Clinic Liaison for support or contact homeclinic@sharedhealthmb.ca.

Enrolment is the patient's choice

A new patient meet-and-greet appointment at your Home Clinic may not always result in patient enrolment. Enrolment is the patient's choice and should take place after being directly involved in the enrolment decision and understanding the benefits. Clinics should confirm enrolment directly with the patient, recording in the EMR the date the active enrolment conversation took place and the patient agreed.

eChart Manitoba upgrade and migration to the cloud

[eChart Manitoba was upgraded on Saturday, Aug. 23, 2025](#). This upgrade unified all eChart users to a single, cloud hosted version that is fully supported with the latest security standards.



Improvements include:

- Return of tabular view for Encounters, Medications and Laboratory
- New summary view for Encounters, Medications, Laboratory, Pathology and Imaging

eChart training videos/material are available on the [eChart Manitoba website](#). See the list below for quick access to video training and printable materials.

- [eChart Fundamentals](#) Required
- [Micro videos](#)
- [Quick reference Guides \(QRGs\)](#)