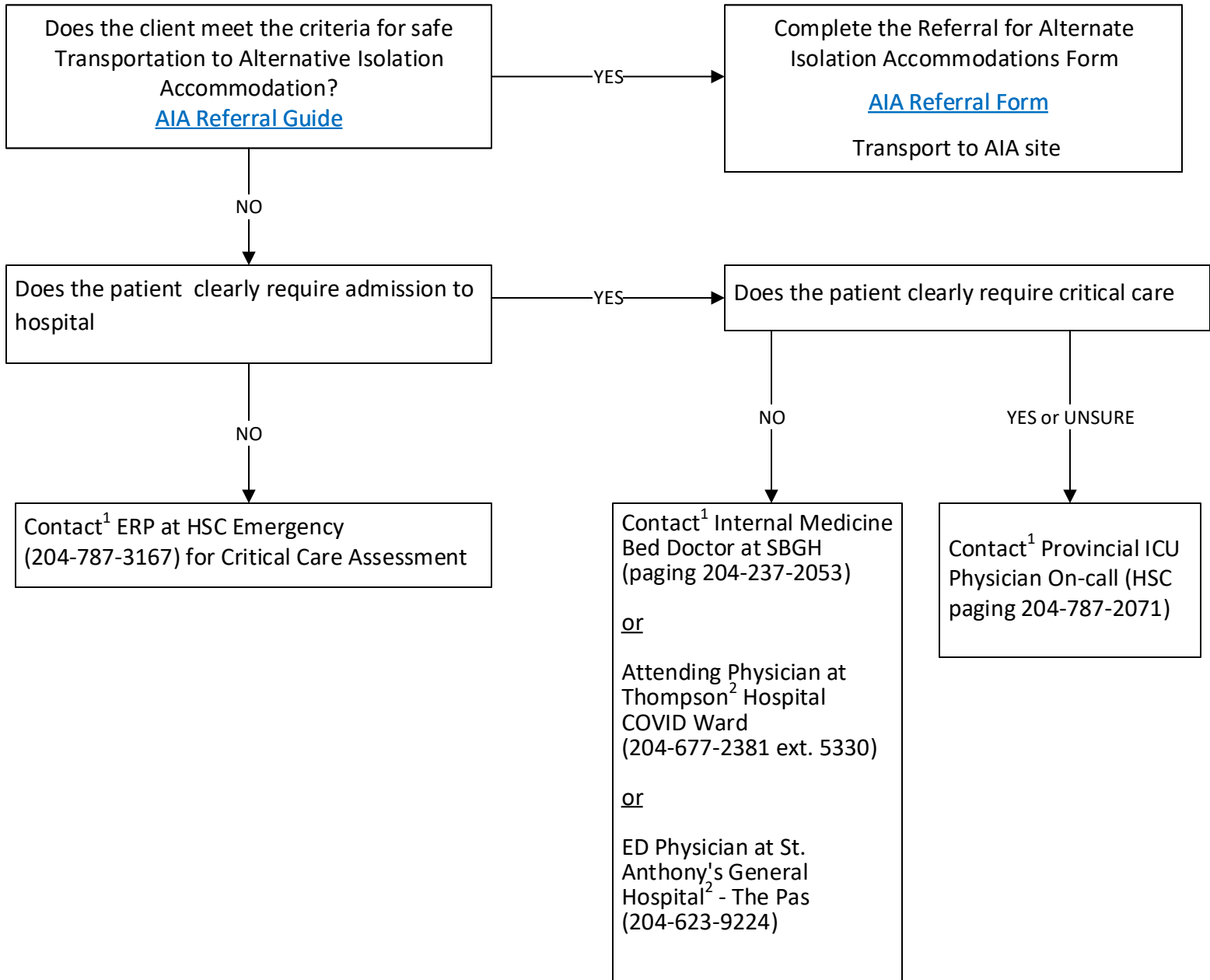


Contact Algorithm for COVID Positive Patients being Considered for Transport from Rural and Northern Communities



¹Timely and direct consultation between the care providers in the sending facility and the destination facility is required.

² Ideally, patients selected for transfer to Thompson or The Pas should be younger, without significant co-morbid conditions and at a low risk of clinical deterioration requiring transfer to critical care.