



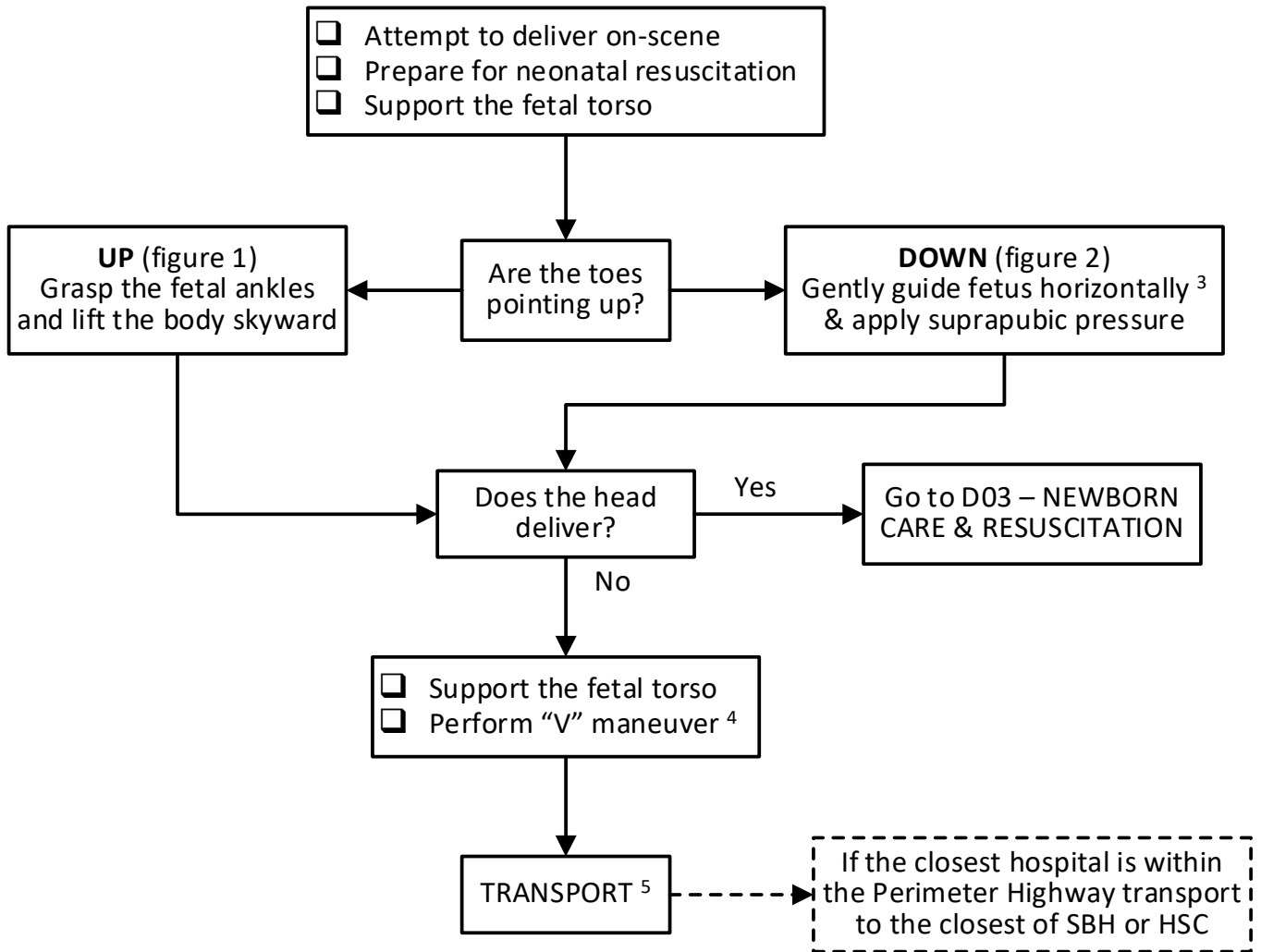
Shared health
Soins communs
Manitoba

D07 - FRANK OR COMPLETE BREECH PRESENTATION

MATERNAL & NEWBORN CARE

Version date: 2023-07-11

Effective date: 2024-02-13 (0700)



IDENTIFIER:

EMR: EMR only

PCP: PCP & ICP

ICP: ICP only

None - All providers

QRG: OBSTETRICAL FACILITIES

() Paramedics should call ahead to confirm that normal obstetrical services are currently available.*

- | | |
|---|---|
| <ul style="list-style-type: none"> • Bethesda Regional Health Centre (Steinbach) • Boundary Trails Health Centre (Winkler) • Brandon Regional Hospital • Dauphin Regional Health Centre • Health Sciences Centre (Winnipeg) • Lake of the Woods District Hospital (Kenora, ON) * • Neepawa Health Centre | <ul style="list-style-type: none"> • Portage District General Hospital (Portage La Prairie) • Selkirk Regional Health Centre (Selkirk) • St. Anthony's General Hospital (The Pas) • St. Boniface Hospital (Winnipeg) • Thompson General Hospital • Yorkton Regional Health Centre (Yorkton, SK) * |
|---|---|

INDICATIONS

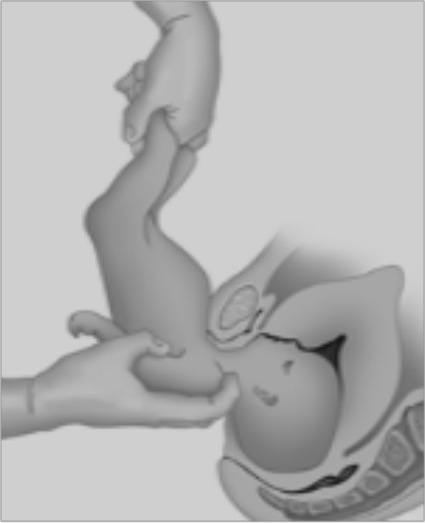
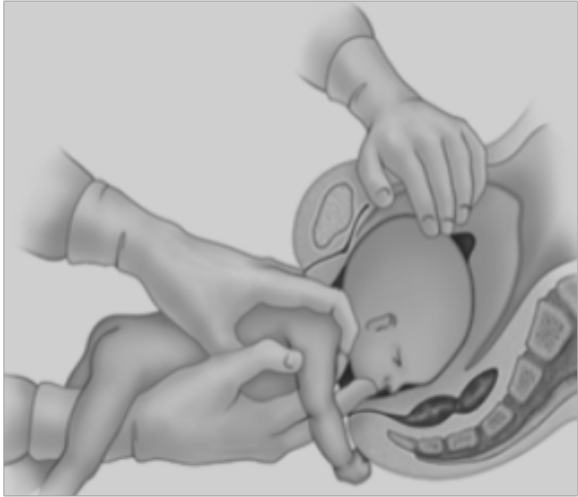
- Complete breech presentation during delivery

CONTRAINDICATIONS



- None

NOTES

1. Obstetrical emergencies are fortunately rare but can be very stressful. Be prepared and call early for assistance or intercept. Consult on-line medical support (OLMS) at any time.
2. Breech presentation occurs in approximately three percent of all deliveries. About 60 percent are frank breeches where the hips are flexed and the knees extended while ten percent are complete where the hips and knees are both flexed (appendix A). Most can be delivered vaginally.
3. Lifting the body upwards may cause hyperextension of the neck possibly resulting in spinal cord injury.
4. Place your hand into the vagina between the vaginal wall and fetal face, and cup your hand over the nose and mouth to prevent obstruction.
5. If unable to deliver on scene, the preferred destination is an obstetrical facility where staff have expertise and resources to manage breech deliver and experience with neonatal resuscitation (QRG). However, if the transport time is excessive initial care may have to be provided at a non-obstetrical facility. Ensure pre-arrival notification.

FIGURE 1: TOES POINTING UP	FIGURE 2: TOES POINTING DOWN
	

LINKS
D03 - NEWBORN CARE & RESUSCITATION

APPROVED BY	
	
EMS Medical Director	EMS Associate Medical Director

VERSION CHANGES (refer to X04 for change tracking)
<ul style="list-style-type: none"> Identifier legend at bottom of flow chart replaces work scope statement in header

APPENDIX A:

FRANK BREECH



COMPLETE BREECH

